

Q :

What are the Mac Export settings for TVPaint 10 in 32bit mode?

I am having trouble exporting from TVP. . While I was exporting, I forgot to compress the video to the H.264 settings so I tried to export it again but it's having issues.

*I can export to the setting I want but **it will only have one frame** when I'm done.*

Is there a settings that I picked by accident? I went back to make sure I am not choosing single image instead of sequence or animation

Answer:

That happens when you have a check-mark next to the box which says "Key Frame Every ____ Frames" . That box should be UNCHECKED .

In the Export Settings it should look exactly as shown below:

Mac Export settings for TVPaint in 32bit mode:

640 x 480

24 FPS

Pixel Aspect: 1.000

Field: Progressive

Click the little "gear" icon next to Quicktime to set the compression quality and frame rate . (the default is at lossless Apple Animation codec, at 30 FPS. *DO NOT USE THAT codec*. Set it to H.264 compression at 24 FPS)

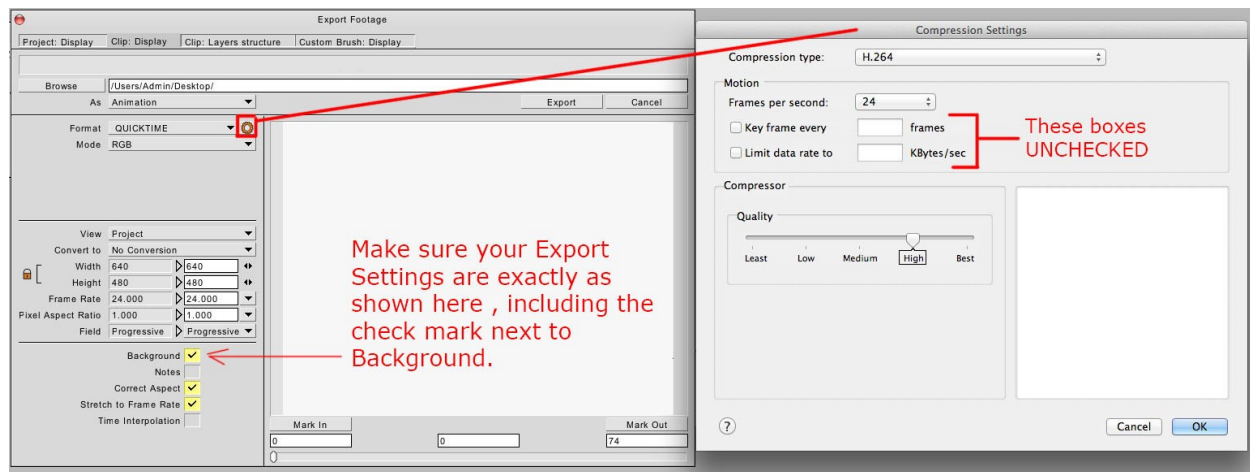
Quicktime .MOV format set to H.264 compression at "High" or "Best" quality .

(***NOTE:** when using H.264 compression codec make sure that the box next to

"Key Frame Every ____ Frames" is UNCHECKED) .

cont

32 bit Quicktime export setting should look exactly like this



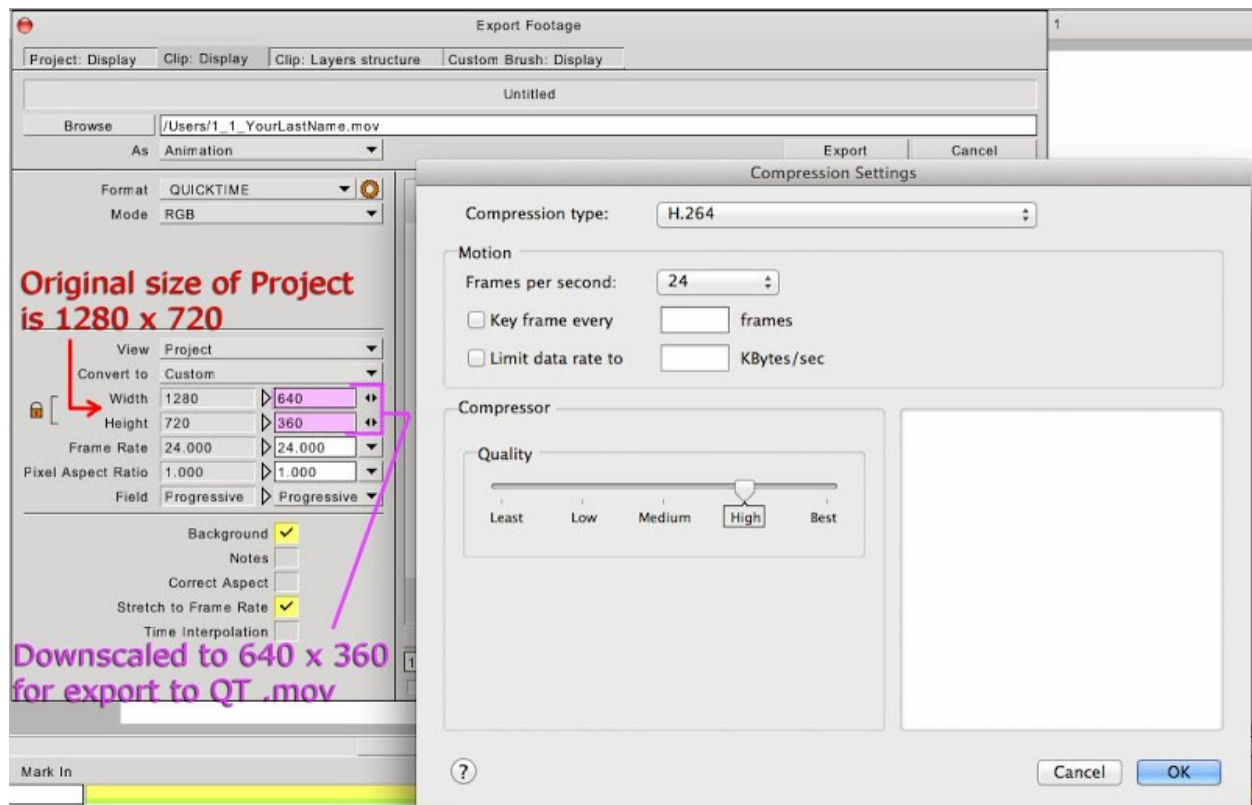
If you export it from TVPaint with the settings as shown above you will not have to do any conversion in Quicktime Pro or Adobe Premiere.

If you want it in 16:9 aspect ratio just make sure your original TVPaint Project settings are for 16:9 aspect ratio (for example: 1280 x 720), then when you go to export it to a movie you can downscale it to 640 x 360 to maintain the same 16:9 aspect ratio, but the smaller 640 x 360 size will keep the file from being too large, which makes it quicker for you to upload and quicker for your instructor to download.

Project settings like this in the Start Up Panel when starting a new TVP project (16:9 aspect ratio / 1280 x 720) -

cont>>>>>

And export settings exactly as shown here to downscale it from 1280 x 720 to 640 x 360 :



-David Nethery
Online Director of Traditional Animation

P.S. this is all covered in great detail in the articles on Exporting in the TVPaint Wiki that Kathleen Quaife posted:

<http://tvpaint.wikispaces.com/FAQ>

Q_06 - through - Q_06f